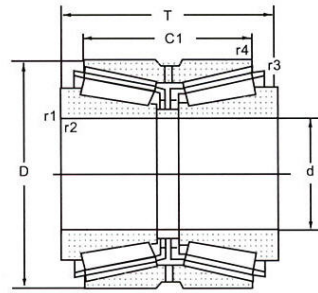


Double Row Tapered Roller Bearing With Double Cone (Inch Series)



select	Inquiry	Bearing NO.	Boundary dimensions(mm)							Basic load ratings(kN)				Abutment and fillet dimensions(mm)				Value			Weight (kg)
			d	D	T	C	r	1.2min	r 3.4min	Cr	Cor	Design	da min	Da max	rb max	ra max	e	Y1	Y2	Y0	
783/774D	100	180.975	104.775	85.725	1.6	3.6	440	750	1	123	171	1.6	3.6	0.39	1.8	2.6	1.7	10.6			
52400/52637D	101.6	161.925	82.548	61.912	0.8	3.6	310	570	1	120	155	0.8	3.6	0.47	1.4	2.1	1.4	5.7			
687/672D	101.6	168.275	92.075	69.85	0.8	3.6	380	685	1	121	161	0.8	3.6	0.47	1.4	2.1	1.4	7.3			
780/773D	101.6	180	104.775	85.725	0.8	3.6	440	750	1	124	171	0.8	3.6	0.39	1.8	2.6	1.7	10.2			
780/774D	101.6	180.975	104.775	85.725	1.6	3.6	440	750	1	124	171	1.6	3.6	0.39	1.8	2.6	1.7	10.4			
861/854D	101.6	190.5	127	101.6	1.6	8	605	1000	1	130	180	1.6	8	0.33	2	3	2	14.4			
HH221449/HH221410D	101.6	190.5	127	104.775	1.6	8	665	1040	1	131	183	1.6	8	0.33	2	3	2	14.3			
98400/98789D	101.6	200.025	115.888	80.216	2.3	3.6	540	850	1	132	190	2.3	3.6	0.63	1.1	1.6	1	14.8			
HH224335/HH224310D	101.6	212.725	142.875	117.475	1.6	7	975	1620	1	137	205	1.6	7	0.33	2.1	3.1	2	23.3			
782/773D	104.775	180	104.775	85.725	0.8	3.6	440	750	1	125	171	0.8	3.6	0.39	1.8	2.6	1.7	9.7			
786/774D	104.775	180.975	104.775	85.725	1.6	6.4	440	750	1	128	171	1.6	6.4	0.39	1.8	2.6	1.7	9.9			
71412/71751D	104.775	190.5	106.632	80.962	1.6	3.6	510	925	1	131	182	1.6	3.6	0.42	1.6	2.4	1.6	12.2			
56418/56650D	106.362	165.1	82.55	63.5	0.8	3.6	335	645	1	126	160	0.8	3.6	0.5	1.4	2	1.3	5.9			
L521949/L521910D	107.95	146.05	49.212	39.688	0.8	1.5	147	330	1	120	141	0.8	1.5	0.39	1.7	2.6	1.7	2.2			
56425/56650D	107.95	165.1	82.55	63.5	0.8	3.6	335	645	1	127	160	0.8	3.6	0.5	1.4	2	1.3	5.7			
71425/71751D	107.95	190.5	106.362	80.962	1.6	3.6	510	925	1	133	182	1.6	3.6	0.42	1.6	2.4	1.6	11.8			
HH224340/HH224310D	107.95	212.725	142.875	117.475	1.6	8	975	1620	1	142	205	1.6	8	0.33	2.1	3.1	2	22.1			
EE342043/342091D	107.95	234.95	111.125	82.55	1.6	6.4	610	840	1	144	222	1.6	6.4	0.43	1.6	2.3	1.5	20			
71432/71751D	109.952	190.5	106.362	80.962	1.6	3.6	510	925	1	134	182	1.6	3.6	0.42	1.6	2.4	1.6	11.5			
64433/64700D	109.952	177.8	92.075	69.85	0.8	3.6	400	750	1	132	173	0.8	3.6	0.52	1.3	1.9	1.3	8			
71437/71751D	111.125	190.5	106.362	80.962	1.6	3.6	510	925	1	135	182	1.6	3.6	0.42	1.6	2.4	1.6	11.3			
64450/64700D	114.3	177.8	92.075	69.85	0.8	3.6	444	788	1	135	173	0.8	3.6	0.52	1.3	1.9	1.3	7.75			
HH224346/HH224310D	114.3	212.725	142.875	117.475	1.6	7	975	1620	1	144	205	1.6	7	0.33	2.1	3.1	2	20.9			
HH224346NA/HH224310D	114.3	212.725	142.875	117.475	1.6	3.6	975	1620	2	140	205	1.6	3.6	0.33	2.1	3.1	2	21			
HM926740/HM926710D	114.3	228.6	115.888	84.138	2.3	3.6	645	1060	1	152	220	2.3	3.6	0.74	0.92	1.4	0.9	20.5			
HH224349/HH224310D	114.976	212.725	142.875	117.475	1.6	7	975	1620	1	144	205	1.6	7	0.33	2.1	3.1	2	20.8			
M224748/M224710D	120	174.625	77.788	61.913	0.8	3.6	365	765	1	137	169	0.8	3.6	0.33	2	3	2	5.8			
M224749/M224710D	120.65	174.625	77.788	61.913	0.8	3.6	365	765	1	138	169	0.8	3.6	0.33	2	3	2	5.7			
795/792D	120.65	206.375	107.95	82.55	0.8	3.2	545	1060	1	149	199	0.8	3.2	0.46	1.5	2.2	1.4	14			
48286/48220D	123.825	182.562	85.725	73.025	0.8	3.6	390	885	1	143	177	0.8	3.6	0.31	2.2	3.3	2.2	7.4			